



2015-2016 ANNUAL REPORT

www.beatricepublicschools.org
402-223-1500

MISSION

The mission of Beatrice Public Schools, a collaborative partnership of students, staff, families, and community, is to guarantee all students achieve academic excellence and develop responsible citizenship by providing aligned, rigorous curriculum and high-quality instruction that utilizes 21st Century tools in a system that is measurably among the best in the nation.



FACULTY & STAFF

The faculty and staff of Beatrice Public Schools for 2015-2016 included 162 classroom teachers and 11 administrators. Support staff consisted of 90 classroom paraprofessionals, 24 office workers, 4.5 nurses, 25 maintenance/custodial staff members, and 31 kitchen personnel.



BOARD OF EDUCATION

Lisa Pieper, President
Jon Zimmerman, Vice President
Janet Byars
Doris Martin
Andy Maschmann
Nancy Sedlacek
Dylan Burenheide, Student Representative

The Board meets for their regular meeting on the second Monday of each month at 7 PM and on the fourth Thursday of the month at 6 PM for a committee meeting. Meetings are held at the administration building (320 N 5th St) and are open to the public.



The Beatrice Public School district includes four elementary schools, a middle school and a high school with PK-12 enrollment totaling just over 2,100.

This report has been prepared to provide a "snapshot" of our school system and is not intended to be a comprehensive report on the condition of education in our district. We ask you to visit our schools and take an active role in the education of Beatrice students. This report is produced by the Superintendent's Office. Comments or questions concerning this report should be directed to 402-223-1500.

AQuESTT
classified Beatrice as

GOOD!



159 STUDENTS

Graduated from Beatrice High School in 2016

BHS offered **15** dual credit courses to students

& **6** Career Academies

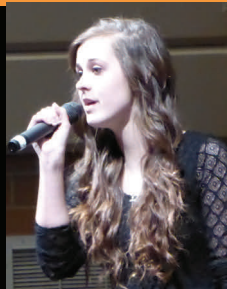
The Beatrice Educational Foundation awarded over

\$77,000 in scholarships

Beatrice Public Schools are members of the River Cities Conference (RCC) which offers interscholastic competition in 16 athletics and activities.

CONFERENCE ACCOMPLISHMENTS

- Girls Golf Runner-ups
- Softball Runner-ups
- Boys Swimming/Diving Runner-ups
- Speech Champions
- Boys Basketball Champions
- Girls Track Runner-ups
- Boys Track Champions



525

Students participated in sports



All-State music selections included 11 students for choir and 2 students for band



ELEMENTARY HIGHLIGHTS

- School improvement goals were to increase student achievement in math.
- Cedar hosted a visiting artist, Nancy Childs, who helped students make paper creations.
- Lincoln students learned about the ocean environment, photography, and writing from visiting artist, Michael Patrick O'Neil.



MIDDLE SCHOOL HIGHLIGHTS

- For the second year in a row, Beatrice Middle School was designated as a "great school" in the 2016 Nebraska Department of Education AQuESTT, a performance progress report.
- BMS added a lunch recess activity to the schedule. Exercise and movement during the school day increases student achievement and reduces behaviors problems.



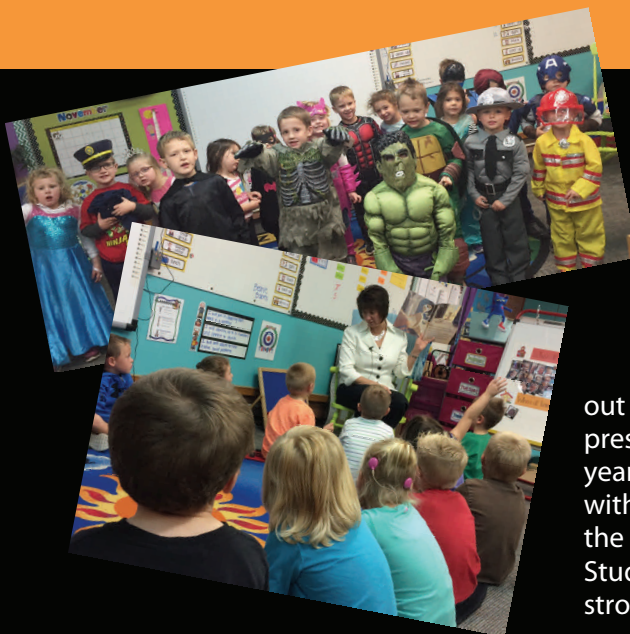
ENRICHMENT PROGRAM

District-wide, 210 students in grades 4-12 participated in activities during the 2015-2016 school year. At the elementary level, students enrichment activities included: literature groups, math and logic activities, field trips, and small group seminars on topics of their interest.



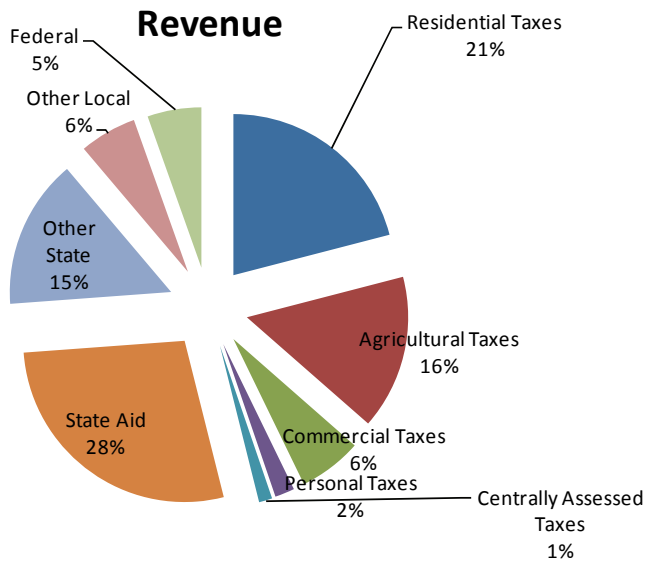
SUMMER SCHOOL

During the month of June, approximately 210 students per week participated in the summer experience at Paddock Lane Elementary. The Best Possible Summer learning experience provided hands-on, engaging activities while weaving in the core principles of reading, math, science, and writing to help students focus more on the application aspect of learning. Every week, students were able to choose a session which sparked their interests. The District partnered with the Beatrice Public Library, the Beatrice Police Department, the Humane Society, the Homestead National Monument, UNL and Gage County Extension Offices, the YMCA, the County Courthouse, and Southeast Community College for support.



EARLY CHILDHOOD

Beatrice Community Preschool is a collaboration between Beatrice Public Schools and Blue Valley Community Action/Head Start to provide high-quality developmentally appropriate, hands-on play based learning opportunity for all preschool children. During the 2015-2016 school year, over 175 children were served in an inclusive setting throughout 10 sections of preschool. Beatrice Community preschool offers a half day three-year old and four-year old classes. Child outcomes are measured with GOLD, scores district-wide were well above the state average for the 2015-2016 school year. Students and teachers work hard to develop strong learning and social emotional learning.



District Levy

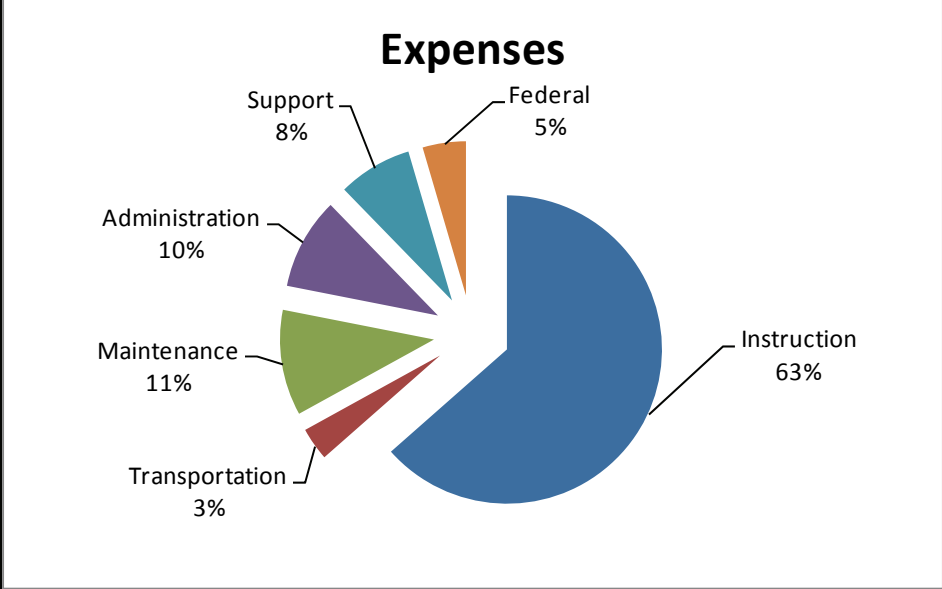
10-11	1.1654
11-12	1.1636
12-13	1.1631
13-14	1.1594
14-15	1.1607
15-16	1.1353

Assessed Valuation

10-11	873,234,205	13-14	968,401,515
11-12	889,698,245	14-15	1,028,944,945
12-13	909,428,408	15-16	1,131,274,591

General Fund Budget

10-11	\$21,912,108
11-12	\$21,625,000
12-13	\$21,641,139
13-14	\$22,070,829
14-15	\$21,582,157
15-16	\$22,689,690



Beatrice Public Schools District 15 does not discriminate on the basis of race, color, national origin, sex, disability, or age in admission or access to, or treatment of employment in, its programs and activities and provides equal access to the Boy Scouts and the designated youth groups. If you feel you have been discriminated against, or have inquiries regarding grievance activities of compliance with Title IX, Title VI or Section 504, contact the Superintendent of Schools, Pat Nauroth, Beatrice Public Schools, 320 North Fifth Street, Beatrice, NE 68310 (402) 223-1500.