

Request for Proposal: Security Cameras

February 29th, 2024

Beatrice Public Schools
320 N 5th Street
Beatrice, NE 68310

RFP Identifier: Security Cameras

Table of Contents

Overview	3
1.1 Product Specifications	4
2.1 Pricing and Payment Structure	4
3.1 Evaluation Process	4
4.1 Discrepancies and Omissions	4
5.1 Contingencies	4
6.1 Vendor Questions and Clarifications	5
Appendix A	6
Appendix B	7

Overview

Beatrice Public Schools is seeking proposals for sixty-seven (67) highly equivalent to 4K IP Wide Dynamic Range NDAA Compliant Cameras and all necessary hardware for installation, and 1 Rack mounted 128 channel Network Video Recorder capable of storing 14 days of footage with the ability for storage expansion. Off site viewing capabilities and associated software shall be included. Cameras and NVR must support the ONVIF protocol. Vendor supplied junction boxes and mounting arms are required. Any parts list and associated specifications are contained within this document.

All proposals which are highly equivalent to or exceed specifications of the security cameras will be considered.

Vendors will have 24 hours after vendor selection is announced to raise any questions. Questions will be addressed via email to Wade Vernon at wvernon@bdstorm.org. The District will have the final authority to the resolution of all questions.

Proposals are due in either hardcopy or in electronic form (PDF format) on or before **March 29, 2024 at 3:00 pm CST** at Beatrice Public Schools, 320 N 5th Street Beatrice, NE 68310 or emailed to jalexander@bpsnebr.org. Emailed proposal documents will be time-stamped from the receiving computer.

Cat6a cabling as well as the patch panels will already be installed by the owner for each camera location. The District will supply POE Fortinet switch ports for each camera. Vendor will be responsible for correct mounting and hardware to mount cameras in all locations.

Questions should be addressed, no later than March 22nd, 2024, to:
Jason Alexander Ph: 402-223-1500 | Email: jalexander@bpsnebr.org

Questions and Answers will be posted on the district website (<https://www.beatricepublicschools.org/>) by March 23rd, 2024.

1.1 Product Specifications

Security cameras, NVR's and cabling as follows. All equipment bid must be new.

Total:

Device	Total
4K IP Wide Dynamic Range NDAA Compliant Cameras	67
Network Video Recorders	1

A map of the camera locations is attached.

2.1 Pricing and Payment Structure

Vendors are required to break down the purchases as outlined in the table in Appendix A. Vendors are required to complete Appendix A as part of their proposal. If additional items are required to complete the project, please include them in Appendix A, listed and itemized as per unit cost.

3.1 Evaluation Process

Please refer to Appendix B for further details regarding the evaluation process.

4.1 Discrepancies and Omissions

Vendors finding discrepancies or omissions in the RFP or having any doubts as to the meaning or intent of any part thereof shall submit such questions or concerns to Kelly Lampe, Bruning-Davenport Unified School District, klampe@bdstorm.org. Addenda issued in correspondence to this RFP shall be considered a part of this RFP and shall become part of any final Contract that may be derived from this RFP. This RFP and its addenda will be part of any possible future contract with a successful vendor(s).

5.1 Contingencies

This RFP should not be considered as a Contract to purchase goods or services, but is a Request for Proposal in accordance with the Terms and Conditions herein and will not

necessarily give rise to a contract. However, RFP responses should be as detailed and complete as possible to facilitate the formation of a contract based on the RFP response(s) that are pursued should Beatrice Public Schools decide to do so. Completion of this RFP form and its associated Appendices are a requirement. Failure to do so will disqualify your RFP response submittal. Vendors must submit sealed RFP responses by the due date and time as specified herein. Electronic submissions will be accepted if created in PDF format and emailed to jalexander@bpsnebr.org by the due date and time as specified herein. Date and time stamp of the receiving computer will govern all emails. Vendors will be considered non responsive if the above requirements are not submitted as requested. The Beatrice Public School District has the right to reject all submitted proposals and resubmit for new proposals through a revised RFP.

6.1 Vendor Questions and Clarifications

Questions should be addressed, no later than March 22nd, to:

Jason Alexander

Ph: 402-223-1500 | Email: balexander@bpsnebr.org

Questions and Answers will be posted on the district website (<https://www.beatricepublicschools.org/>) by March 23rd.

Appendix A

Required Form for RFP Response.

TABLE 2.1: Beatrice Public Schools SITE: Beatrice Elementary			
Description	Part No	Total	UNIT COST
Other Equipment:			

Final

Appendix B
Evaluation Rubric
Beatrice Public Schools

1. Cost of eligible equipment and/or eligible maintenance 25 points

Cost of Equipment will be released at time of proposal opening. Points will be awarded during the evaluation of the proposal(s).

2. Compatibility with currently owned district devices 20 points

Compatibility is very important. Points will be awarded during the evaluation of the proposal(s) and determination of compatibility with existing equipment will be done at that same time. Zero (0) points will be awarded for non-compatible devices and twenty (20) points will be awarded for full 100% compatibility.

3. Features included 15 points

All documented features of the device in the RFP will be evaluated and points awarded as such. Points will not be awarded for features that are not included in the cost of the device as presented in the RFP.

4. Support of hardware 10 points

Technical support will be contacted and will be evaluated on its technical knowledge, English as the primary language, and ease of use.

5. Reliability 10 points

Reliability score will be determined using the following criteria:

- a. References given in the RFP
- b. Known other users of the device
- c. Personal experiences

6. User Interface 10 points

The user interface will be evaluated and points awarded on the ease of use and the completeness of the interface to the device.

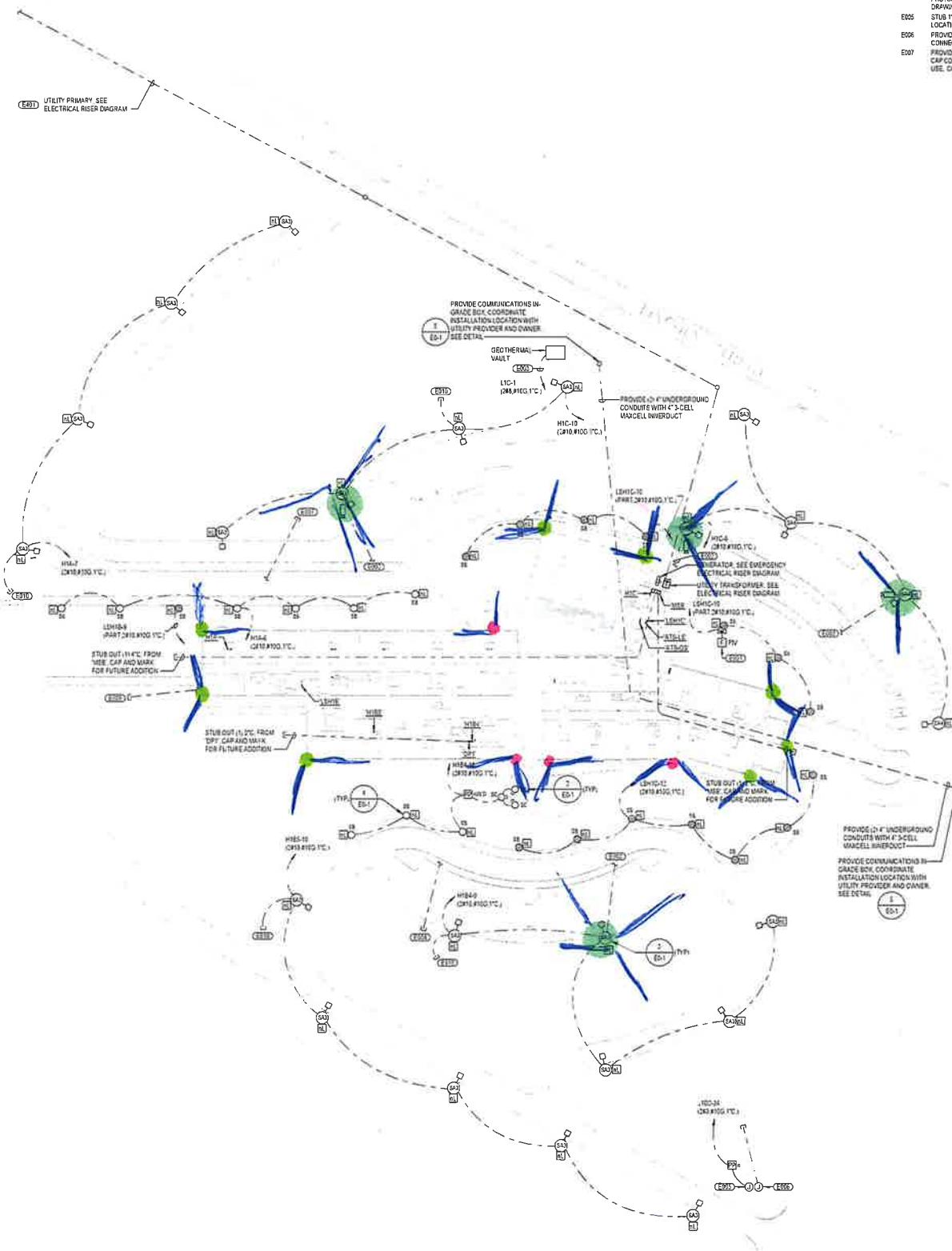
7. References 10 points

References will be contacted and points awarded on their responses.

LEFT BOUNDARY

67 Total

18 Outdoor



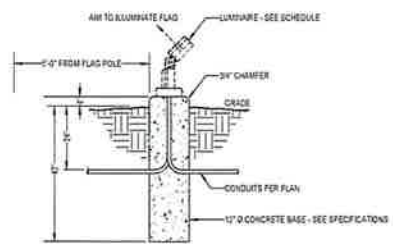
KEYNOTES

- E001 PROVIDE FIRE ALARM CONNECTION TO PUMP/VALVE...
E002 PROVIDE 1" CONDUIT WITH PULL STRING FROM POLE TO NEAREST MDP OR IDF FOR CAMERA...
E003 PROVIDE 120V CONNECTION TO PRE-MANUFACTURED GEOTHERMAL VAULT...
E004 PROVIDE 1/2" SPARE 1" CONDUITS WITH PULL STRING FROM HUB TO SITE FOR FUTURE GROUND MOUNTED PHOTOSTATIC ARRAY...
E005 STUB OUT 1/2" CONDUIT TO FUTURE EXTERIOR SIGNAGE LOCATION FROM PANEL 1101...
E006 PROVIDE 1" CONDUIT WITH PULL STRING FROM EXTERIOR SIGNAGE LOCATION TO MDP D117 FOR DATA CONNECTIVITY...
E007 PROVIDE 1/2" SPARE 1" CONDUITS WITH PULL STRING FROM HUB TO SITE FOR FUTURE PARKING LOT LIGHTING...

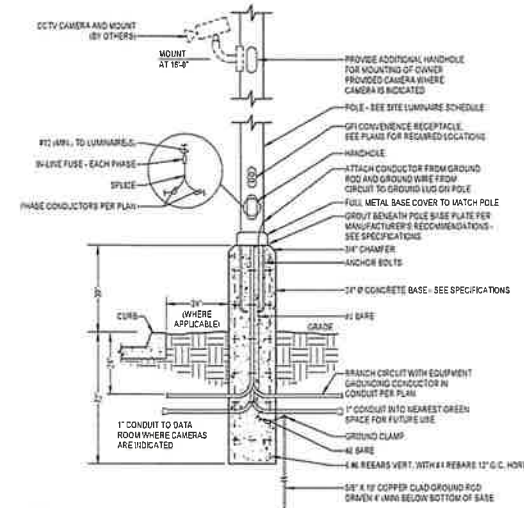
KEYNOTES

- E008 PROVIDE 1/2" SPARE 1" CONDUITS WITH PULL STRING FROM HUB TO SITE FOR FUTURE PARKING LOT LIGHTING...
E009 PROVIDE 1/2" SPARE 1" CONDUITS WITH PULL STRING FROM HUB TO SITE FOR FUTURE DRIVE AND BASKETBALL COURT LIGHTING...
E010 STUB OUT SPARE 1" CONDUIT WITH PULL STRING FROM POLE TO SITE FOR FUTURE LIGHTING...
E011 PROVIDE ONE 1/2" CONDUIT PER POWER COMPANY SPECIFICATIONS BELOW GRADE FOR INSTALLATION OF POWER COMPANY PRIMARY CONDUCTORS...

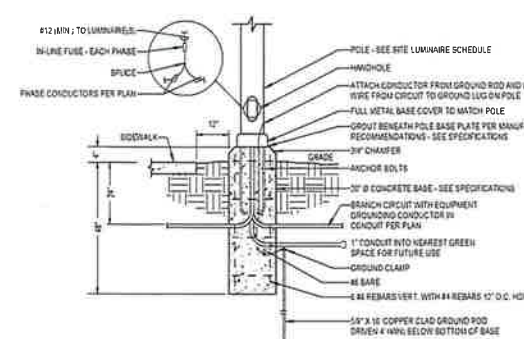
EXTERIOR CAMERA LOCATIONS
INTERIOR CAMERA LOCATIONS
Suggested Camera



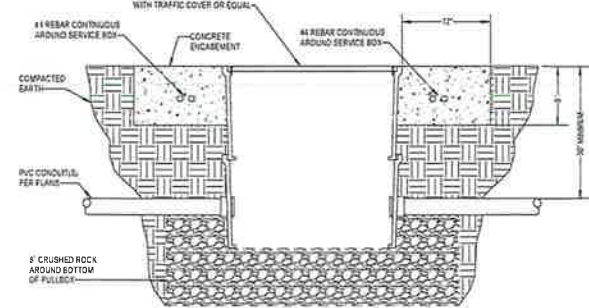
2 FLOODLIGHT BASE DETAIL
E0-1 NOT TO SCALE



3 30\"/>



4 4\"/>



5 IN-GRADE PULLBOX DETAIL
E0-1 NOT TO SCALE



PROJECT
TEAM
ARCHITECTURE + INTERIORS
BCDM ARCHITECTS
1015 North 96th Street, Suite 300
Omaha, NE 68114
CIVIL ENGINEER
LAMP RYAN ARSON
14710 W. Dodge Rd. Ste. 100
Omaha, NE 68154
STRUCTURAL ENGINEER
BCDM ARCHITECTS
1015 North 96th Street, Suite 300
Omaha, NE 68114
MECHANICAL + ELECTRICAL ENGINEER
MORRISSEY ENGINEERING
4840 N 116th St.
Omaha, NE 68164

Progress Print
NOT TO BE USED FOR CONSTRUCTION
09/07/2022
dm
morriseyengineering, inc.

PROJECT # 22078
morrisey engineering inc
1101 North 116th Street
Omaha, NE 68154
P 402.841.444
www.morriseyengineering.com

DISCLAIMER: This document is prepared as part of the service of a party...
The user shall exercise caution in the use of this document and shall be responsible for the safety of the work performed...

REVISION SCHEDULE table with columns for No., Description, Date.

BEATRICE NEW ELEMENTARY SCHOOL

320 N. 5th St. Beatrice, NE 68310

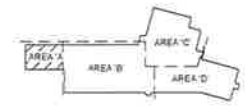
BEATRICE PUBLIC SCHOOLS

ELECTRICAL SITE PLAN

LEFT BINDING EDGE

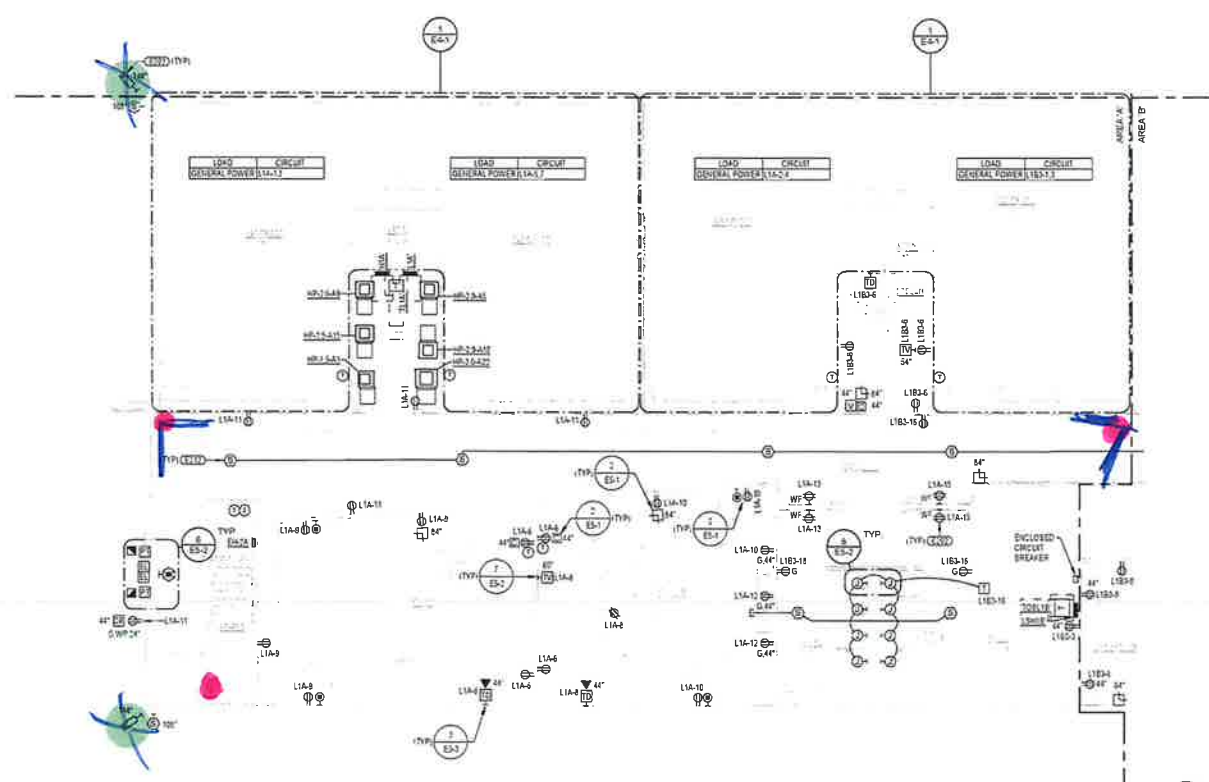
KEYNOTES

- E202 LOCATE RECEPTACLE BEHIND MECHANICAL UNIT SO THAT CORD AND PLUG ARE CONCEALED INSIDE OR BEHIND UNIT. PROVIDE 200 GFCI BREAKER
- E203 PROVIDE RECESS MOUNT 4"X16" BOX AND 1" CONDUIT WITH PULL STRING TO NEAREST ACCESSIBLE CEILING FOR OWNER PROVIDED SECURITY CAMERA. FINAL LAYOUT AND LOCATIONS OF SECURITY CAMERAS INDICATED ON SPECIAL SYSTEMS AND TELECOM PLANS ARE TO BE COORDINATED WITH ARCHITECT AND OWNER PRIOR TO RUSHING
- E210 PROVIDE SINGLE GANG JUNCTION BOX FOR INTERCOM SPEAKER INSTALLATION. MOUNT JUNCTION BOX IN EXPOSED CEILING OR MOUNT TO BOTTOM OF STRUCTURAL DECK IN EXPOSED CEILING AREA. PROVIDE 34% BETWEEN LOCATIONS OR TO NEAREST ACCESSIBLE CEILING. COORDINATE DOWNING WITH VENDOR FOR ROUTING OF CONDUITS



- EXTERIOR CAMERA LOCATIONS
- INTERIOR CAMERA LOCATIONS

3



1 MAIN LEVEL PLAN - AREA 'A' - POWER
 E2-1A 1/8" = 1'-0" 0' 8' 16'



PROJECT TEAM
 ARCHITECTURE + INTERIORS
 BCDM ARCHITECTS
 1015 North 98th Street, Suite 300
 Omaha, NE 68114

CIVIL ENGINEER
 LAMP PYNNEARSON
 14710 W. Dodge Rd. Ste. 100
 Omaha, NE 68154

STRUCTURAL ENGINEER
 BCDM ARCHITECTS
 1015 North 98th Street, Suite 300
 Omaha, NE 68114

MECHANICAL + ELECTRICAL ENGINEER
 MORRISSEY ENGINEERING
 4640 N 118th St.
 Omaha, NE 68164

Progress Print
 NOT TO BE USED
 FOR CONSTRUCTION
 09/20/2022
 Date
 morrissey engineering, inc.

WEI PROJECT # 20217
morrissey engineering inc
 Professional (Electrical Engineering) License # 000000000
 4640 N 118th Street
 Omaha, NE 68164
 P: 402.671.4544
 www.morrisseyengineering.com

DISCLAIMER
 This document is intended to be used as part of the design or permit process only. It is not intended to be used for construction of the project or as a basis for any other construction or engineering work. It is not intended to be used for any other purpose without the prior written permission of Morrissey Engineering, Inc. or its affiliates.

We warrant that the design, work, all documents and information herein are accurate, complete, and conform to the applicable laws, codes, and regulations. We do not warrant that the design, work, all documents and information herein are suitable for any other purpose without the prior written permission of Morrissey Engineering, Inc. or its affiliates.

REVISION SCHEDULE

No.	Description	Date

BEATRICE NEW ELEMENTARY SCHOOL

320 N 5th St. Beatrice, NE 68310

BEATRICE PUBLIC SCHOOLS

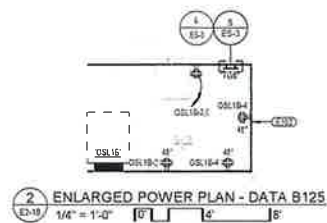
MAIN LEVEL PLAN - AREA 'A' - POWER

E2-1A

REDI CHECK
 BCDM NO. 8431-00
 SEPTEMBER 20 2022

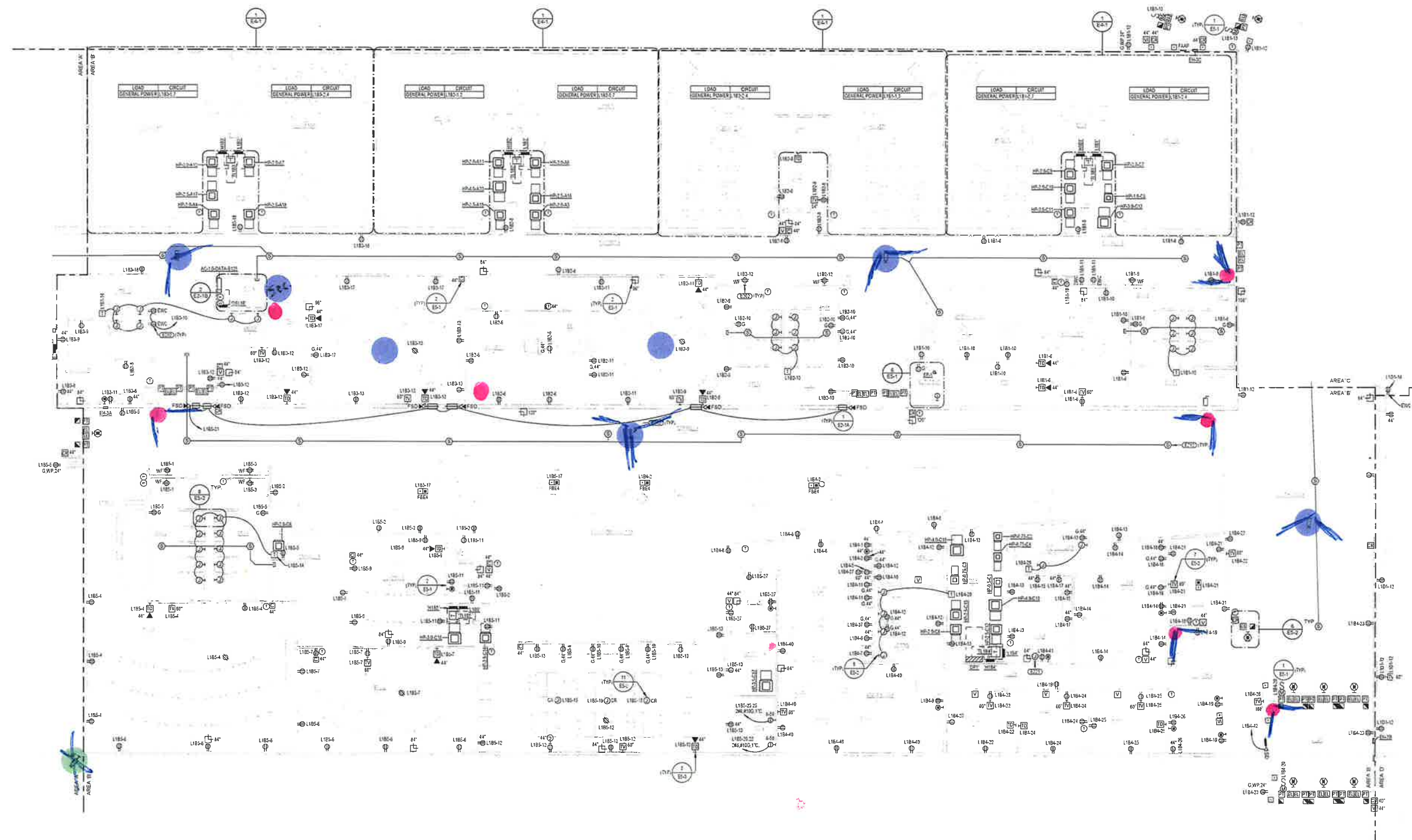
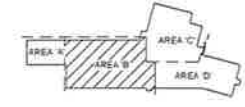


LEFT BINDING EDGE



15

- KEYNOTES**
- E202 LOCATE RECEPTACLE BEHIND MECHANICAL UNIT SO THAT CORD AND PLUG ARE CONCEALED INSIDE OR BEHIND UNIT. PROVIDE 20' GFI BREAKER
 - E203 PROVIDE RECESS MOUNT 4" TYP BOX AND 1" CONDUIT WITH PULL STRING TO NEAREST ACCESSIBLE CEILING FOR OWNER PROVIDED SECURITY CAMERA. FINAL LOCATION AND LOCATIONS OF SECURITY CAMERAS INDICATED ON SPECIAL SYSTEMS AND TELECOM PLANS ARE TO BE COORDINATED WITH ARCHITECT AND OWNER PRIOR TO RUSH-IN
 - E204 PROVIDE SINGLE GANG JUNCTION BOX FOR INTERCOM SPEAKER INSTALLATION. MOUNT JUNCTION BOX IN GYP BOARD CEILING OR MOUNT TO BOTTOM OF STRUCTURAL DECK IN EXPOSED CEILING AREA. PROVIDE 3/4" BETWEEN LOCATIONS OR TO NEAREST ACCESSIBLE CEILING. COORDINATE EXACT LOCATION WITH ARCHITECT FOR ROUTING OF CONDUITS
 - E205 PROVIDE SINGLE GANG RECESSED JUNCTION BOX WITH COVER PLATE AND 3/4" FROM BOX TO PANEL L184 FOR FUTURE 20A BREAKER CORNER. COORDINATE EXACT LOCATION WITH OWNER PRIOR TO RUSH-IN
 - E206 PROVIDE COMMUNICATIONS BACKBOARD 3/4" AC GRADE A SIDE OUT. ALL SIDES PAINTED WITH 2 COATS OF WHITE FIRE RATED PAINT, 1 TYP.
- EXTERIOR CAMERA LOCATIONS
● INTERIOR CAMERA LOCATIONS



1 MAIN LEVEL PLAN - AREA 'B' - POWER
1/8" = 1'-0"

PROJECT
TEAM
ARCHITECTURE + INTERIORS
BCDM ARCHITECTS
1015 North 98th Street, Suite 300
Omaha, NE 68114

CIVIL ENGINEER
LAMP BY NEARSON
14710 W. Dodge Rd. Ste. 100
Omaha, NE 68154

STRUCTURAL ENGINEER
BCDM ARCHITECTS
1015 North 98th Street, Suite 300
Omaha, NE 68114

MECHANICAL + ELECTRICAL ENGINEER
MORRISSEY ENGINEERING
4540 N 118th St.
Omaha, NE 68184

Progress Print
NOT TO BE USED
FOR CONSTRUCTION
09/22/2022
Date
morriseyengineering.com

ME1 PROJECT # 22075
morrisey engineering inc
Systems & Electrical Engineering Technology Corporation
1442 North 173rd Street
Omaha, NE 68134
P: 402.491.4144
www.morriseyengineering.com

Warning:
This document represents all or part of the drawing's technical information. It is the responsibility of the user to ensure that the information is current and accurate. The user is responsible for obtaining the most current information from the project team. The user is responsible for ensuring that the information is used in accordance with the project requirements. The user is responsible for ensuring that the information is used in accordance with the project requirements. The user is responsible for ensuring that the information is used in accordance with the project requirements.

REVISION SCHEDULE

NO.	DATE	DESCRIPTION

**BEATRICE
NEW
ELEMENTARY
SCHOOL**

320 N. 5th St. Beatrice, NE 68310

BEATRICE PUBLIC SCHOOLS

MAIN LEVEL PLAN - AREA 'B' - POWER

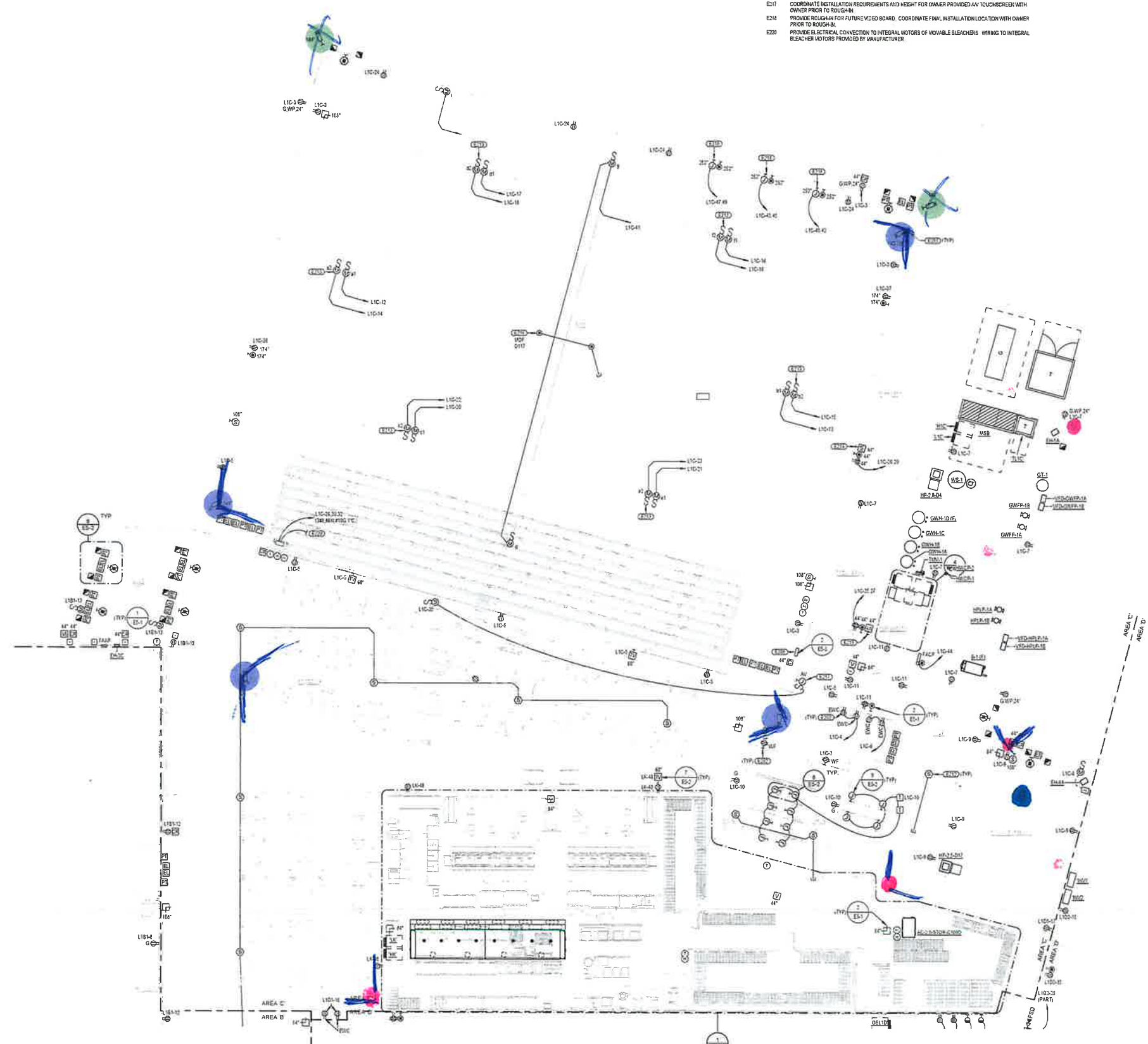
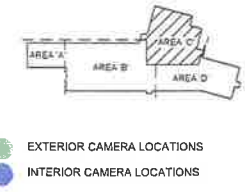
E2-1B
REDI CHECK
BCDM NO. E431-03
SEPTEMBER 30, 2022



LEFT BINDING EDGE

9

- KEYNOTES**
- E202 LOCATE RECEPTACLE BEHIND MECHANICAL UNIT SO THAT CORD AND PLUG ARE CONCEALED INSIDE OR BEHIND UNIT. PROVIDE 30" GFCI BREAKER
 - E203 PROVIDE RECESS ABOUT 4" HITE BOX AND 1/2" CONDUIT WITH PULL STRING TO NEAREST ACCESSIBLE CEILING FOR OWNER PROVIDED SECURITY CAMERA. FINAL LAYOUT AND LOCATIONS OF SECURITY CAMERAS INDICATED ON SPECIAL SYSTEMS AND TELECOM PLANS ARE TO BE COORDINATED WITH ARCHITECT AND OWNER PRIOR TO ROUGH-IN.
 - E208 PROVIDE BACKBOX AND RECESSED HOFFMAN ENCLOSURE TO ACCOMMODATE BACKSTOP AND DIVIDER OPERATION TOGGLE SWITCHES. COORDINATE ROUGH-IN REQUIREMENTS WITH BACKSTOP EQUIPMENT PROVIDER
 - E210 PROVIDE SINGLE GANG JUNCTION BOX FOR INTERCOM SPANNER INSTALLATION. MOUNT JUNCTION BOX IN SYMBAND CEILING OR MOUNT TO BOTTOM OF STRUCTURAL DECK IN EXPOSED CEILING AREAS. PROVIDE 3/4" BETWEEN LOCATIONS OR TO NEAREST ACCESSIBLE CEILING. COORDINATE JOINTING WITH THE PROVIDER FOR ROUTING OF CONDUITS.
 - E212 PROVIDE ELECTRICAL CONNECTION TO MOTORIZED BACKSTOP HEIGHT ADJUSTMENT MOTOR
 - E214 PROVIDE TWO (2) 7" AND ONE (1) 1" CONDUIT STUBBED TO ABOVE GYM SPACE FOR OWNER PROVIDED SOUND SYSTEM
 - E216 PROVIDE TWO (2) 2" AND ONE (1) 1" CONDUIT STUBBED TO ABOVE CAFETERIA SPACE FOR OWNER PROVIDED SOUND SYSTEM
 - E216 PROVIDE SINGLE GANG JUNCTION BOX AT EACH WIRELESS ACCESS POINT LOCATION. PROVIDE 1" BETWEEN LOCATIONS INDICATED AND 1" FROM LAST LOCATION TO LOCATION LABELED ADJACENT TO KEYNOTE. PROVIDE INSULATED BUSHINGS ON CONDUIT END. PAINT CONDUIT AND BACKBOX TO MATCH CEILING COLOR. COORDINATE INSTALLATION REQUIREMENTS AND HEIGHT FOR OWNER PROVIDED W/ TOUCHSCREEN WITH OWNER PRIOR TO ROUGH-IN.
 - E218 PROVIDE ROUGH-IN FOR FUTURE VIDEO BOARD. COORDINATE FINAL INSTALLATION LOCATION WITH OWNER PRIOR TO ROUGH-IN.
 - E220 PROVIDE ELECTRICAL CONNECTION TO INTEGRAL MOTORS OF MOVABLE BLEACHERS. WIRING TO INTEGRAL BLEACHER MOTORS PROVIDED BY MANUFACTURER.



1 MAIN LEVEL PLAN - AREA 'C' - POWER
E2-1C
1/8" = 1'-0"

PROJECT
TEAM
ARCHITECTURE + INTERIORS
 BCDM ARCHITECTS
 1015 North 98th Street, Suite 300
 Omaha, NE 68114
CIVIL ENGINEER
 LAMP RYNEARSON
 14710 W. Dodge Rd. Ste. 100
 Omaha, NE 68154
STRUCTURAL ENGINEER
 BCDM ARCHITECTS
 1015 North 98th Street, Suite 300
 Omaha, NE 68114
MECHANICAL + ELECTRICAL ENGINEER
 MORRISSEY ENGINEERING
 4940 N 118th St.
 Omaha, NE 68154

Progress Print
 NOT TO BE USED
 FOR CONSTRUCTION
 09/30/2022
 Date
 morrissey engineering, inc.

MSE PROJECT & TOOL

 4400 North 178th Street
 Omaha, NE 68154
 P: 402.831.8144
 www.morrisseyengineering.com

DISCLAIMER
 This document is prepared as a part of the design to hereby present safety for the limited purpose of construction of the project or building. It is not intended to be used for construction site without the supervision of a professional engineer. It is published by copyright law.

NOTES
 1. In the scale drawings, verify all dimensions and clearances from architectural, structural, MEP and other disciplines. Drawings of all size. Lay out and coordinate all work prior to installation to ensure clearances required for installation. Measurements and notes are to be verified in accordance with other notes. Do not fabricate prior to verification of clearance for all trades.

REVISION SCHEDULE

NO.	DATE	DESCRIPTION

**BEATRICE
 NEW
 ELEMENTARY
 SCHOOL**

320 N. 5th St. Beatrice, NE
 68310

BEATRICE PUBLIC
 SCHOOLS

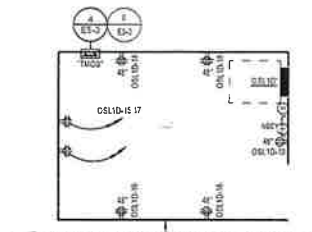
MAIN LEVEL PLAN -
 AREA 'C' - POWER

E2-1C

REDI CHECK
 8/30/22 10:54 AM
 SEPTEMBER 30, 2022



LEFT BINDING EDGE

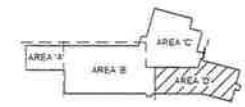


2 ENLARGED POWER PLAN - MDF D117
1/4" = 1'-0"

6

KEYNOTES

- E2-1 LOCATE RECEPTACLE SWIND MECHANICAL UNIT SO THAT CORD AND PLUG ARE CONCEALED INSIDE OR BEHIND UNIT. PROVIDE 201 GFCI BREAKER.
- E2-2 PROVIDE RECESS MOUNT 4 1/2" X 6" X 12" CONDUIT WITH PULL STRING TO NEAREST ACCESSIBLE CEILING FOR OWNER PROVIDED SECURITY CAMERA. FINAL LAYOUT AND LOCATIONS OF SECURITY CAMERAS INDICATED ON SPECIAL SYSTEMS AND TELECOM PLANS ARE TO BE COORDINATED WITH ARCHITECT AND OWNER PRIOR TO RUSHING.
- E2-3 PROVIDE COMMUNICATIONS BACKBOARD, 24" AC GRADE A SIDE OUT. ALL SIDES PAINTED WITH 2 COATS OF WHITE FIRE RATED PAINT (TYP).



- EXTERIOR CAMERA LOCATIONS
- INTERIOR CAMERA LOCATIONS



1 MAIN LEVEL PLAN - AREA 'D' - POWER
1/8" = 1'-0"

PROJECT
TEAM
 ARCHITECTURE + INTERIORS
 BCDM ARCHITECTS
 1015 North 88th Street, Suite 300
 Omaha, NE 68114

CIVIL ENGINEER
 LAMP RYNEARSON
 14710 W. Dodge Rd. Ste 100
 Omaha, NE 68154

STRUCTURAL ENGINEER
 BCDM ARCHITECTS
 1015 North 88th Street, Suite 300
 Omaha, NE 68114

MECHANICAL + ELECTRICAL ENGINEER
 MORRISSEY ENGINEERING
 4910 N. 115th St.
 Omaha, NE 68164

Progress Print
 NOT TO BE USED
 FOR CONSTRUCTION
 09/20/2022
 Site
 morrisseyengineering.com

MEI PROJECT # 22075

MEI morrissey engineering inc
 4910 North 115th Street
 Omaha, NE 68164
 P: 402.471.4114
 www.morrisseyengineering.com

Disclaimer:
 In connection with this project, all or part of this drawing is hereby licensed to the contractor for the limited purpose of construction of the project or projects, and no other use, including reproduction, distribution, or use for any other project, is permitted without the prior written consent of Morrissey Engineering, Inc. as prohibited by copyright law.

Note:
 If a red mark is present, verify all dimensions and check for any conflicts with the architectural drawings. Stop any other equipment, materials, or work until the conflict is resolved. All work shall be coordinated with the architect and owner prior to construction. The contractor shall be responsible for obtaining all necessary permits and licenses. The contractor shall be responsible for obtaining all necessary permits and licenses. The contractor shall be responsible for obtaining all necessary permits and licenses.

REVISION SCHEDULE

NO.	DATE	DESCRIPTION

**BEATRICE
 NEW
 ELEMENTARY
 SCHOOL**

320 N. 5th St. Beatrice, NE 68310

BEATRICE PUBLIC SCHOOLS

MAIN LEVEL PLAN - AREA 'D' - POWER

E2-1D

REDI CHECK
 BCDM AUG. 24/21-22
 SEPTEMBER 30 2022



LEFT BINDING EDGE

KEYNOTES

- EXD LOCATE RECEPTACLE BEHIND MECHANICAL UNIT SO THAT CORD AND PLUG ARE CONCEALED INSIDE OR BEHIND UNIT. PROVIDE 20' GFCI BREAKER.
- EXE PROVIDE SINGLE-DRAW JUNCTION BOX FOR INTERCOM SPEAKER INSTALLATION. MOUNT JUNCTION BOX IN UPWARD CEILING OR ADJANT TO BOTTOM OF STRUCTURAL DECK IN EXPOSED CEILING AREAS. PROVIDE 30% BETWEEN LOCATIONS OR TO NEAREST ACCESSIBLE CEILING. COORDINATE ZONING WITH IT VENDOR FOR ROUTING OF CONDUITS.



- EXTERIOR CAMERA LOCATIONS
- INTERIOR CAMERA LOCATIONS



PROJECT
TEAM
ARCHITECTURE + INTERIORS
 BCDM ARCHITECTS
 1015 North 98th Street, Suite 300
 Omaha, NE 68114
CIVIL ENGINEER
 LAMP RYNEARSON
 14710 W. Dodge Rd, Ste. 100
 Omaha, NE 68154
STRUCTURAL ENGINEER
 BCDM ARCHITECTS
 1015 North 98th Street, Suite 300
 Omaha, NE 68114
MECHANICAL + ELECTRICAL ENGINEER
 MORRISSEY ENGINEERING
 4840 N 118th St
 Omaha, NE 68164

Progress Print
 NOT TO BE USED
 FOR CONSTRUCTION
 09/20/2022
 6:16
 morrissey engineering, inc.

183 PROJECT # 22075

mechanical/electrical/lighting technology | commercial
 11410 South 13th Street
 Omaha, NE 68148
 P: 402.691.9144
 www.morrisseyengineering.com

DISCLAIMER
 permission is granted to use all or part of this drawing as a reference for the limited purpose of construction of the building or structure, provided that the building or structure is constructed in accordance with the design and specifications of this drawing, and that the user obtains all other necessary permits, approvals, and notices and is fully responsible for all other aspects of the project. No other use or reproduction of this drawing is permitted without the written consent of Morrissey Engineering, Inc. as prohibited by copyright law.

NOTES
 1. All work shall comply with all applicable codes and ordinances, including but not limited to the International Building Code and other applicable codes and ordinances. All work shall be done in accordance with the design and specifications of this drawing, and the user shall be responsible for all other aspects of the project. No other use or reproduction of this drawing is permitted without the written consent of Morrissey Engineering, Inc. as prohibited by copyright law.

REVISION SCHEDULE

No.	Description	Date

**BEATRICE
 NEW
 ELEMENTARY
 SCHOOL**

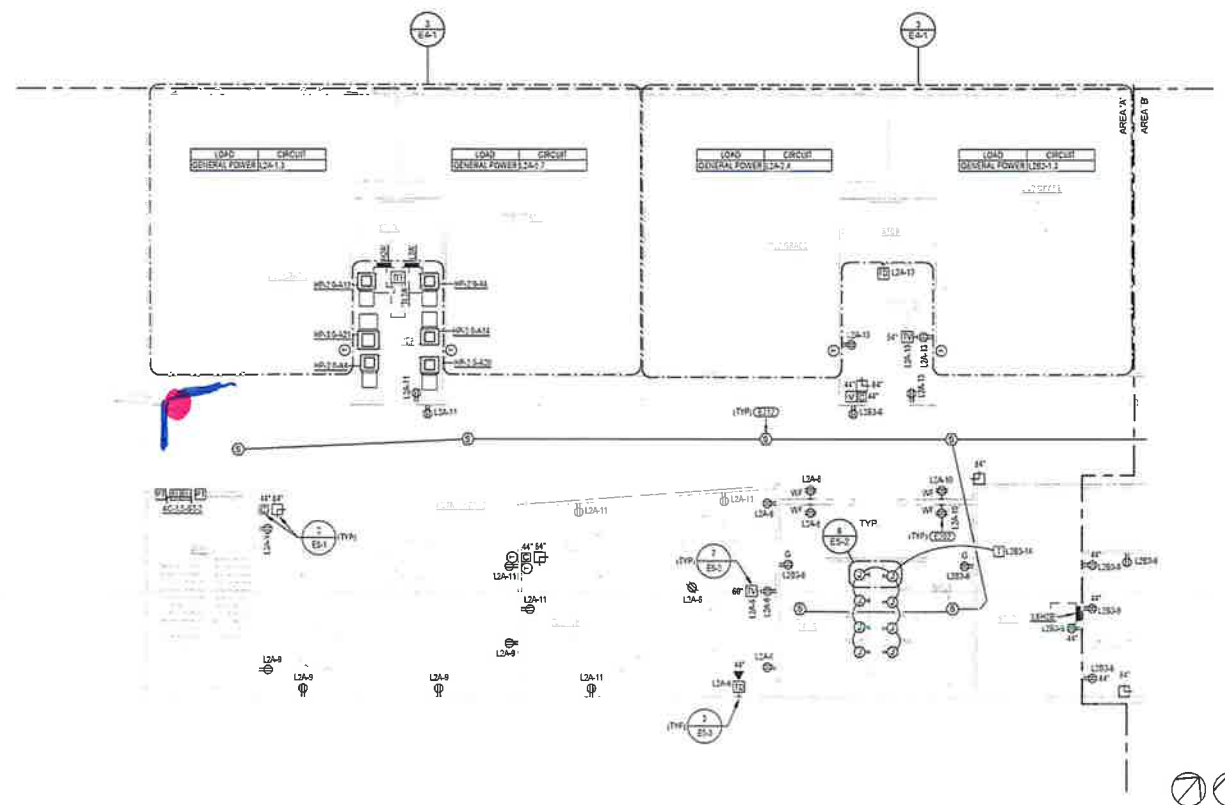
320 N. 5th St. Beatrice, NE
 68310

BEATRICE PUBLIC
 SCHOOLS

UPPER LEVEL PLAN -
 AREA 'A' - POWER

E2-2A

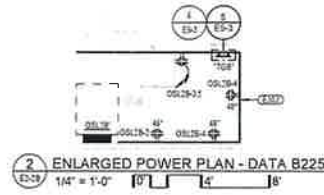
REDI CHECK
 BCDM NO. 2481-00
 SEPTEMBER 30, 2022



1 UPPER LEVEL PLAN - AREA 'A' - POWER
 1/8" = 1'-0" 16'



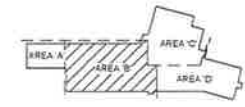
LEFT BINDING EDGE



2 ENLARGED POWER PLAN - DATA B225
1/4" = 1'-0"

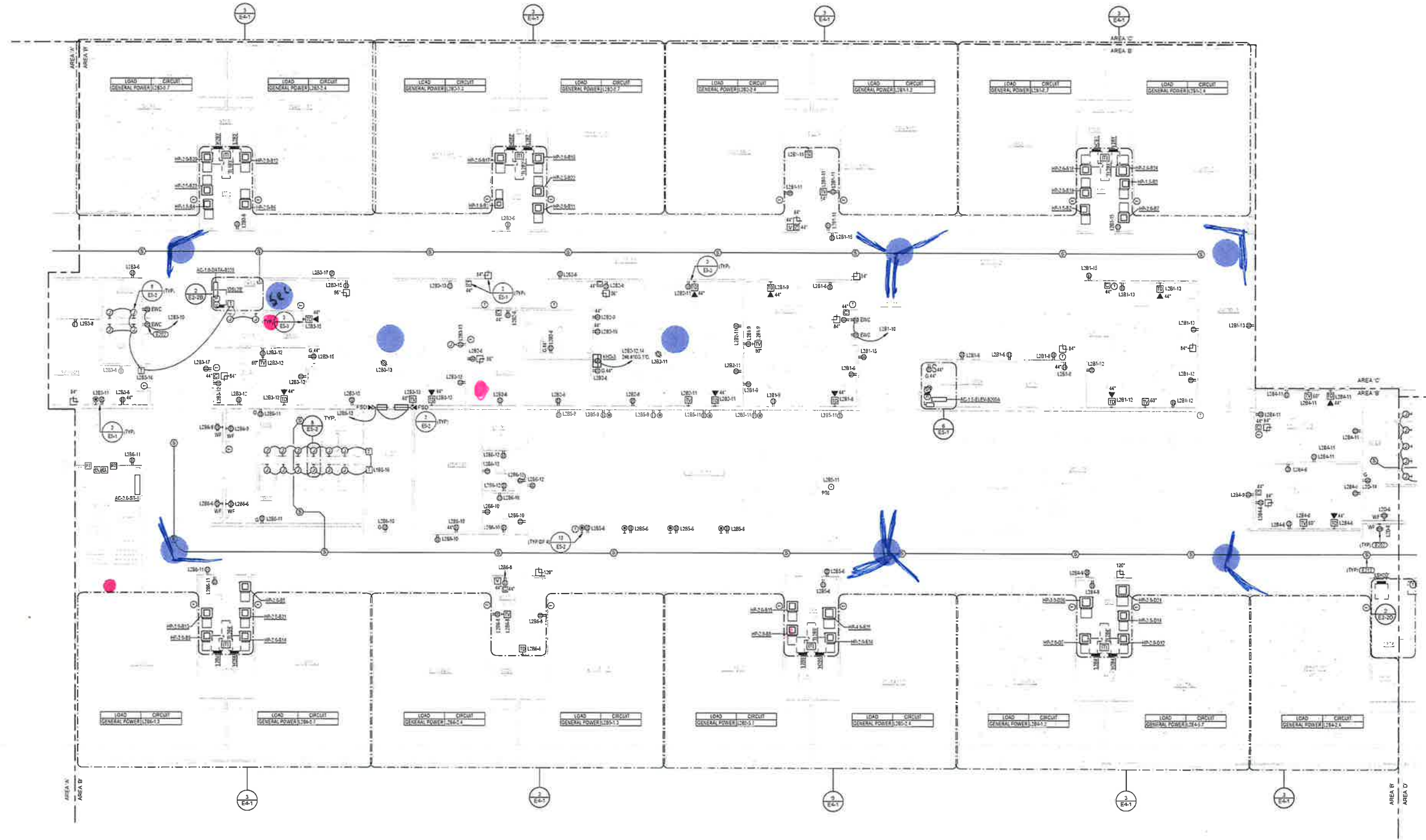
KEYNOTES

- E201 LOCATE RECEPTACLE BEHIND MECHANICAL UNIT SO THAT CORD AND PLUG ARE CONCEALED INSIDE OR BEHIND UNIT. PROVIDE 20FT GFCI BREAKER.
- E202 PROVIDE SINGLE GANG JUNCTION BOX FOR INTERCOM SPEAKER INSTALLATION. MOUNT JUNCTION BOX TO CHASSIS OR MOUNT TO BOTTOM OF STRUCTURAL BEAM IN EXPOSED CEILING AREA. PROVIDE 3/4\"/>
- E203 PROVIDE COMMUNICATIONS BACKBOARD, 3/4\"/>



- EXTERIOR CAMERA LOCATIONS
- INTERIOR CAMERA LOCATIONS

14



1 UPPER LEVEL PLAN - AREA 'B' - POWER
1/8" = 1'-0"

PROJECT
TEAM
ARCHITECTURE + INTERIORS
 BCDM ARCHITECTS
 1015 North 98th Street, Suite 300
 Omaha, NE 68114
CIVIL ENGINEER
 LAMP RYNEARSON
 14710 W. Dodge Rd. Ste. 100
 Omaha, NE 68154
STRUCTURAL ENGINEER
 BCDM ARCHITECTS
 1015 North 98th Street, Suite 300
 Omaha, NE 68114
MECHANICAL + ELECTRICAL ENGINEER
 MORRISSEY ENGINEERING
 4940 N 118th St
 Omaha, NE 68164

Progress Print
 NOT TO BE USED
 FOR CONSTRUCTION
 09/30/2022
 0422
 morrissey engineering, inc.

100% PROJECT # 22025

MORRISSEY ENGINEERING INC.
 4242 North 118th Street
 Omaha, NE 68164
 www.morrisseyengineering.com

Disclaimer:
 This document is a representation of all or part of the drawing, including any and all revisions, and is provided for the sole purpose of construction of the project. It is not to be used for any other purpose, including but not limited to, construction, without the prior written consent of MORRISSEY ENGINEERING, INC. It is provided by computer-aided design.

Note:
 It is not scale drawings. Verify all dimensions and clearances from architectural, structural, and other drawings. All work shall be completed in accordance with the approved drawings. All work shall be completed in accordance with the approved drawings. All work shall be completed in accordance with the approved drawings. All work shall be completed in accordance with the approved drawings.

REVISION SCHEDULE

NO.	DATE	DESCRIPTION

BEATRICE NEW ELEMENTARY SCHOOL

320 N 5th St, Beatrice, NE 68310

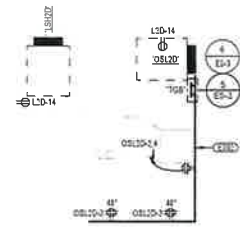
BEATRICE PUBLIC SCHOOLS

UPPER LEVEL PLAN - AREA 'B' - POWER

E2-2B
 REDI CHECK
 BCDM NO. 5431-00
 SEPTEMBER 30, 2022



LEFT BINDING EDGE



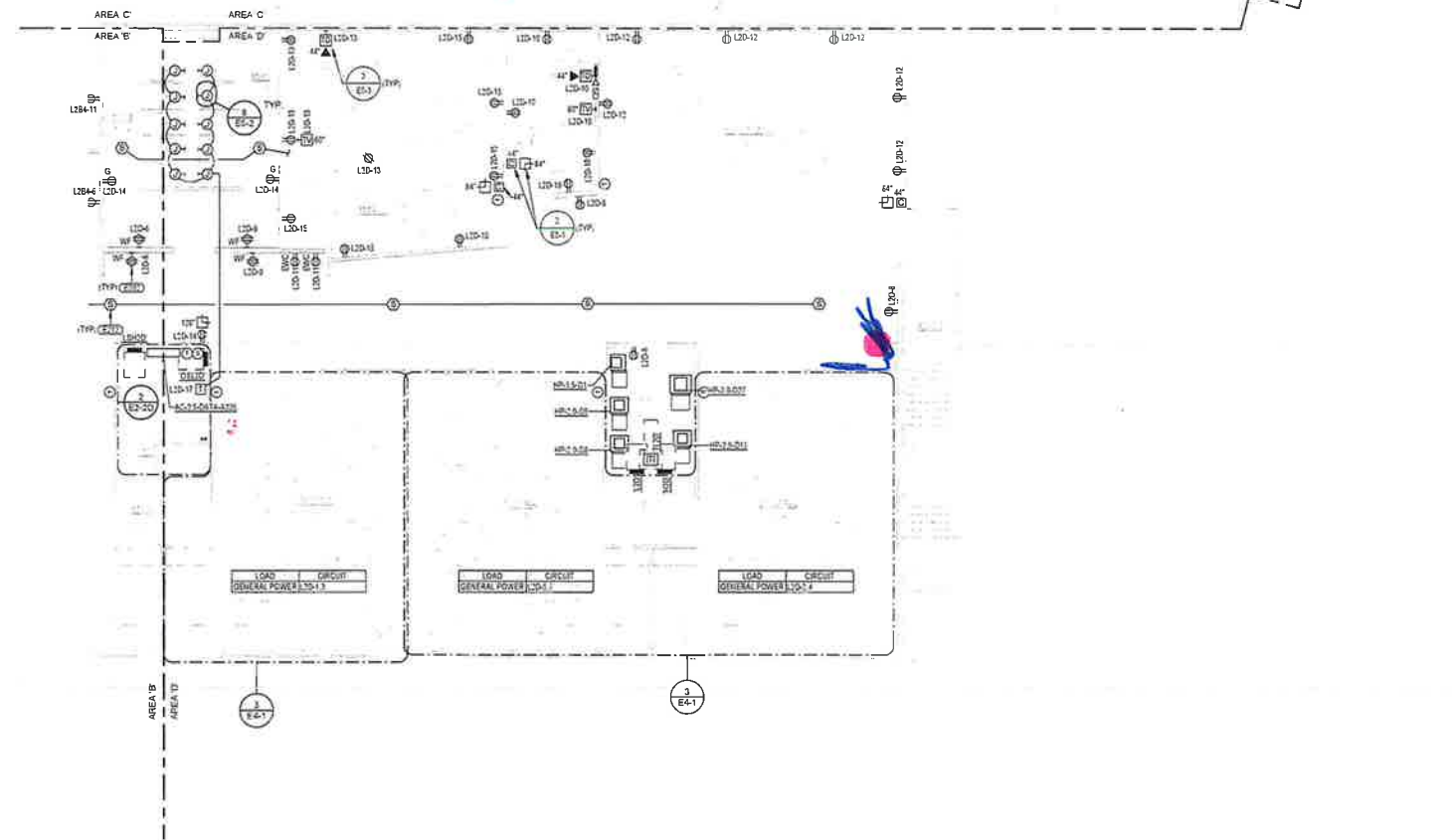
2 ENLARGED POWER PLAN - DATA A236
 E2-2D 1/4" = 1'-0" 0' 8" 16'

KEYNOTES

- E201 LOCATE RECEPTACLE BEHIND MECHANICAL UNIT SO THAT CORD AND PLUG ARE CONCEALED INSIDE OR BEHIND UNIT. PROVIDE 20A GFCI BREAKER
- E202 PROVIDE SINGLE GANG JUNCTION BOX FOR INTERCOM SPEAKER INSTALLATION. MOUNT JUNCTION BOX IN CYPRESS BOARD CEILING OR MOUNT TO BOTTOM OF STRUCTURAL DECK IN EXPOSED CEILING AREAS. PROVIDE 24" BETWEEN LOCATIONS OR TO NEAREST ACCESSIBLE CEILING. COORDINATE WITH IT VENDOR FOR ROUTING OF CONDUITS
- E203 PROVIDE COMMUNICATIONS BACKBOARD, 3/4" AC GRADE A SIDE CUT. ALL SIDES PAINTED WITH 2 COATS OF WHITE FIRE RATED PAINT, (TYP)



- EXTERIOR CAMERA LOCATIONS
- INTERIOR CAMERA LOCATIONS



1 UPPER LEVEL PLAN - AREA D - POWER
 E2-2D 1/8" = 1'-0" 0' 8" 16'



PROJECT
 TEAM
 ARCHITECTURE + INTERIORS
 BCDM ARCHITECTS
 1015 North 93rd Street, Suite 300
 Omaha, NE 68114
 CIVIL ENGINEER
 LAMP BYNTERSON
 14710 W. Dodge Rd. Ste. 100
 Omaha, NE 68154
 STRUCTURAL ENGINEER
 BCDM ARCHITECTS
 1015 North 93rd Street, Suite 300
 Omaha, NE 68114
 MECHANICAL + ELECTRICAL ENGINEER
 MORRISSEY ENGINEERING
 4940 N 118th St.
 Omaha, NE 68164

Progress Print
 NOT TO BE USED
 FOR CONSTRUCTION
 09/20/2022
 09/20
 morrissey engineering, inc.

MEJ PROJECT # 22075

Professional (Advanced) Lighting Technology Commission
 4914 South 150th Street
 Omaha, NE 68148
 P: 402.831.6164
 www.morrisseyengineering.com

DISCLAIMER
 I, the undersigned, hereby certify that this drawing is a true and correct copy of the original drawing as submitted to me for review and approval. I am not responsible for any errors or omissions in this drawing or for any consequences that may result from its use. I have not performed a site visit to verify the accuracy of the information provided in this drawing. I have not performed a site visit to verify the accuracy of the information provided in this drawing. I have not performed a site visit to verify the accuracy of the information provided in this drawing.

REVISION SCHEDULE

NO.	DESCRIPTION	DATE
1		

BEATRICE
 NEW
 ELEMENTARY
 SCHOOL

320 N. 5th St. Beatrice, NE
 68310

BEATRICE PUBLIC
 SCHOOLS

UPPER LEVEL PLAN -
 AREA 'D' - POWER

E2-2D

REDI CHECK
 BCDM NO. 2434-00
 SEPTEMBER 20 2022

